

EU International Policies and Pastoralism

A New Deal



*Philippe THOMAS,
EC INTPA .F3*

European Committee of
the Regions

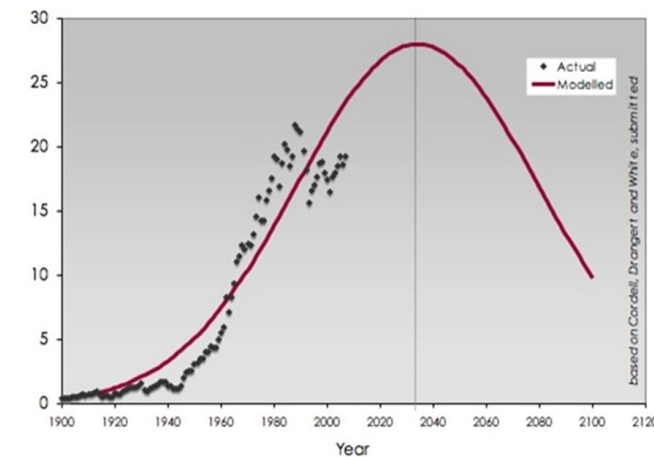
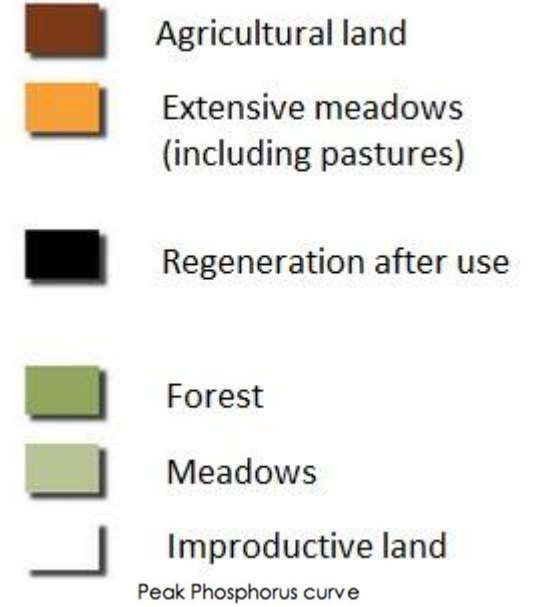
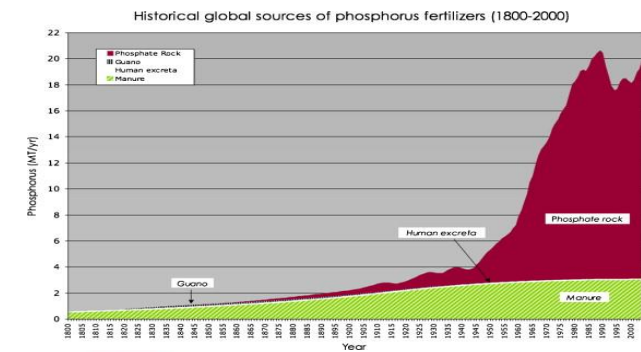
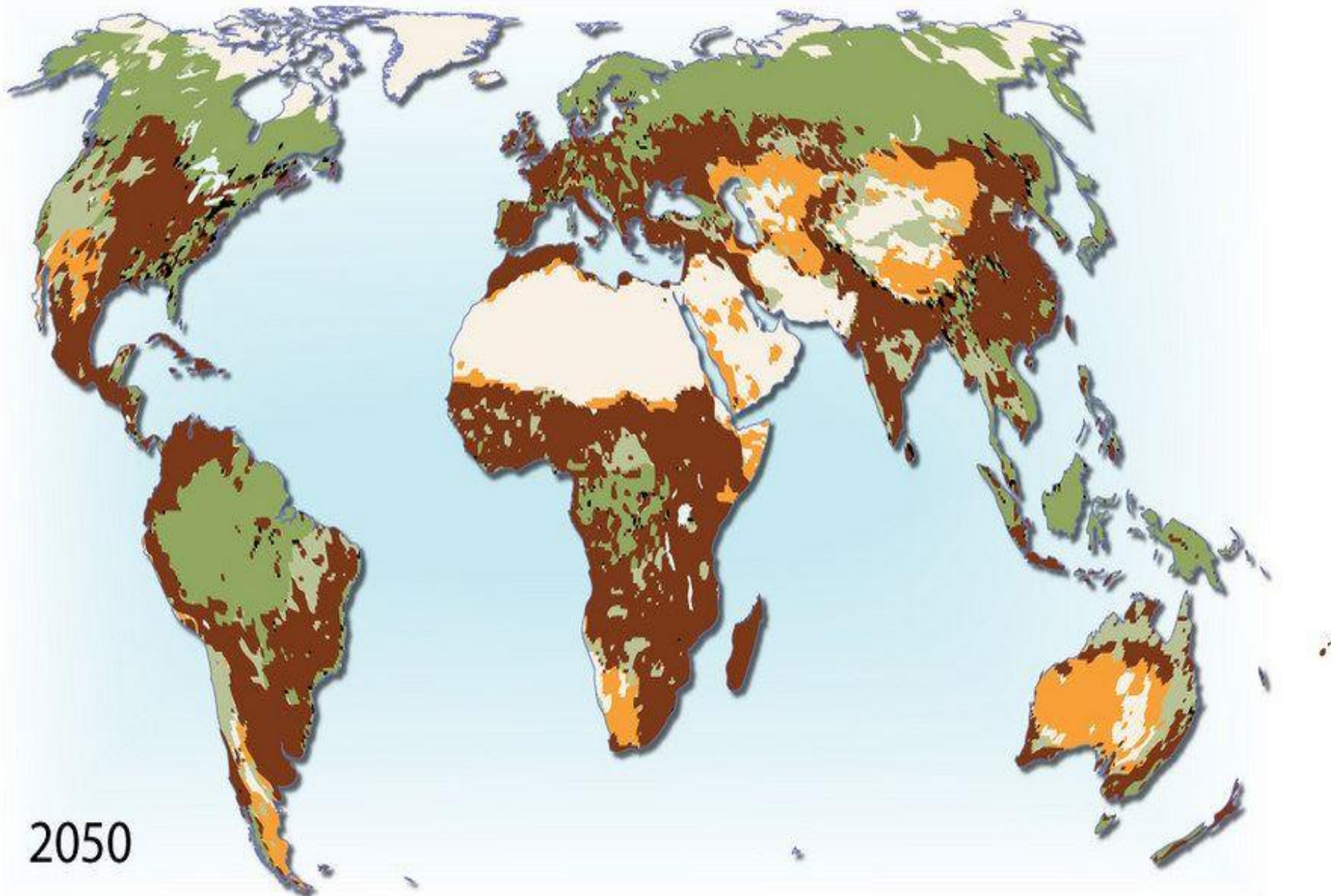
-Webinar, 14 June 2021-



1. The evidence leading to the EU Green Deals

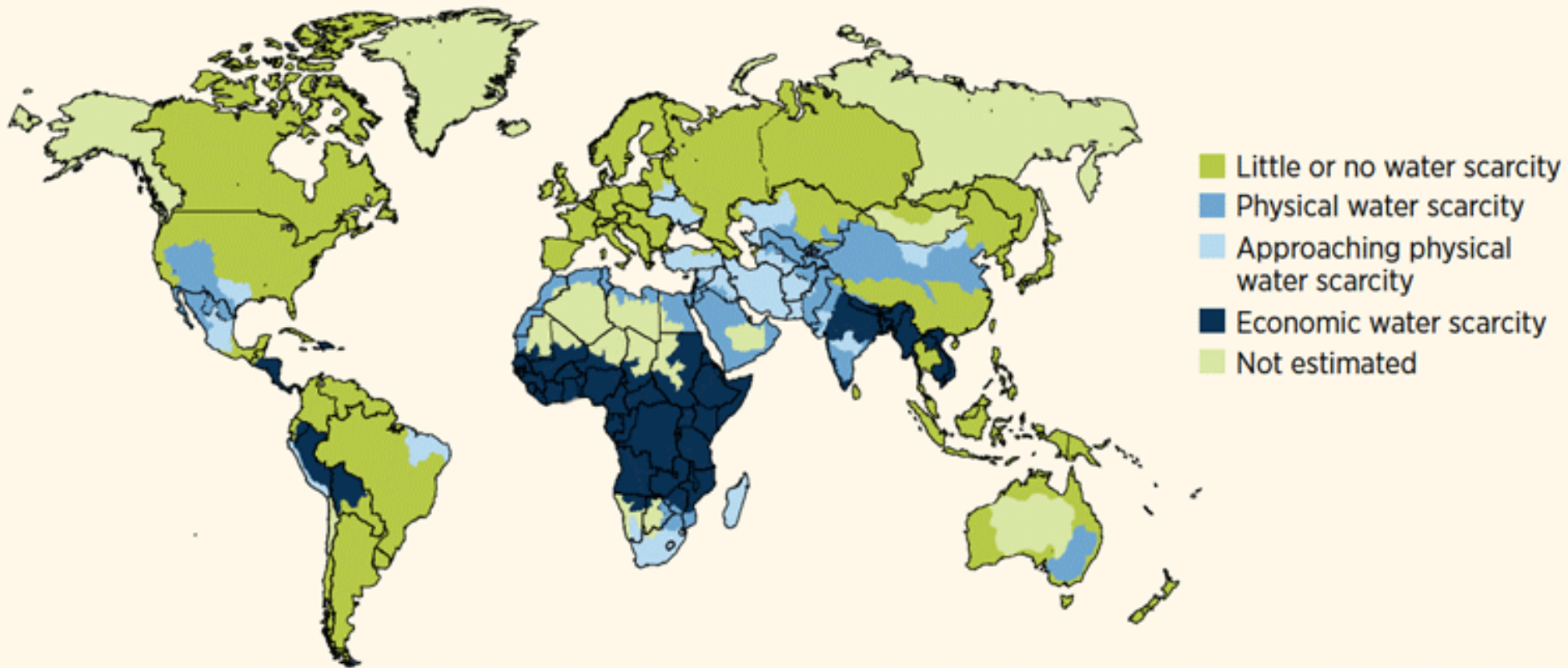
Resources scarcity

Evolution of land use



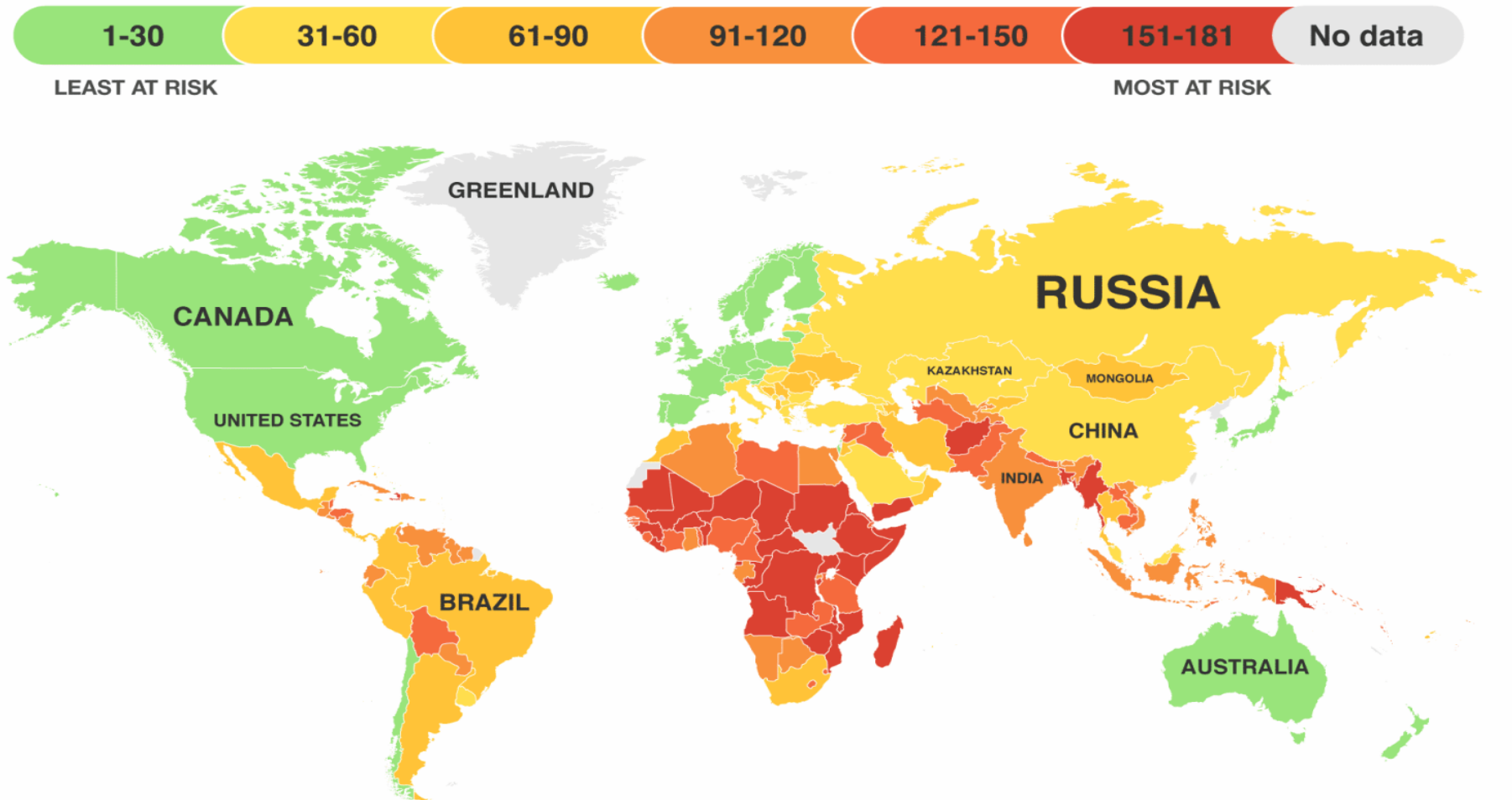
Economic water scarcity

Global physical and economic water scarcity



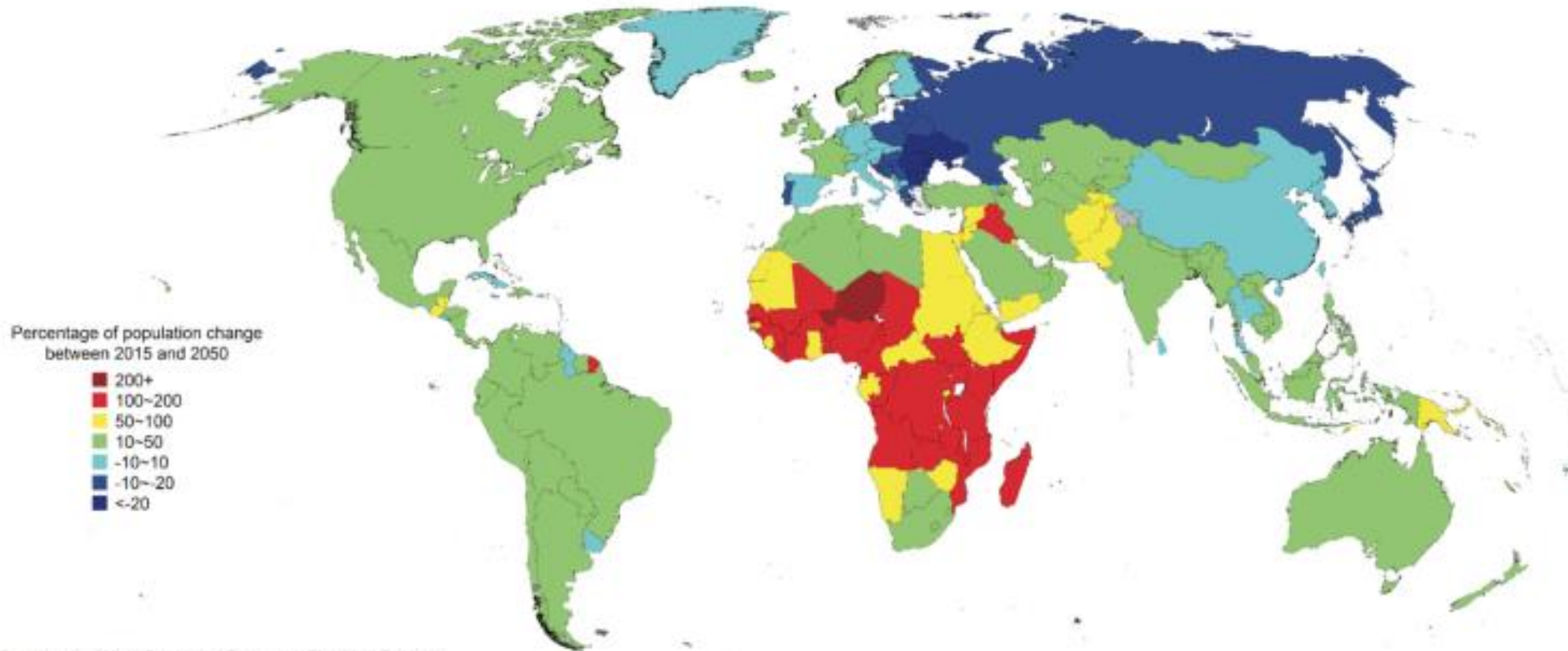
Country most at risk from climate change

WORLD MAP



Demography

Projected population growth, 2015-2050



Data source: World Population Prospects: The 2015 Revision

The boundaries and names shown and the designations used on this map do not imply official endorsement or acceptance by the United Nations. Dotted line represents approximately the Line of Control in Jammu and Kashmir agreed upon by India and Pakistan. The final status of Jammu and Kashmir has not yet been agreed upon by the parties.

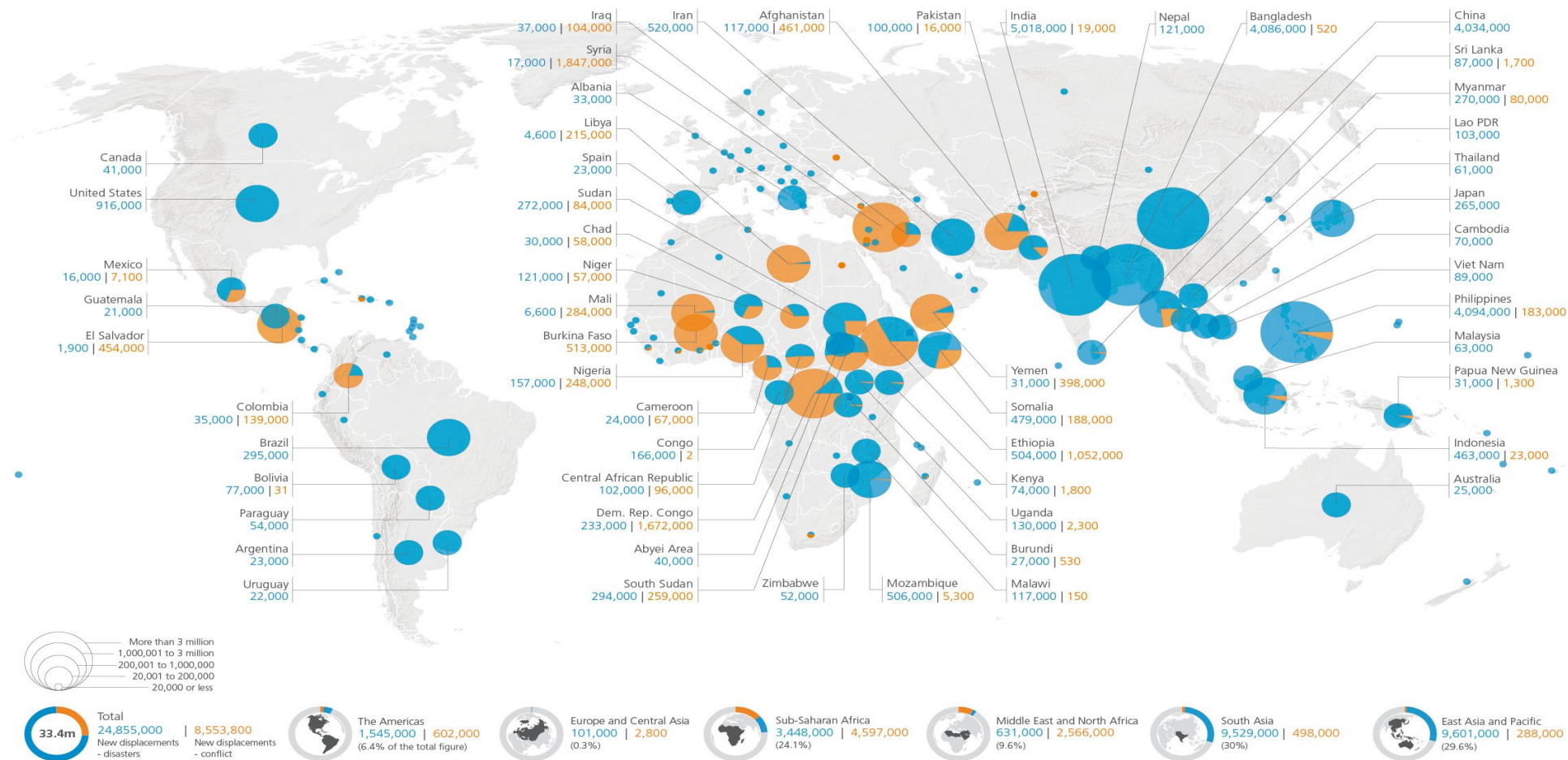
Final boundary between the Republic of Sudan and the Republic of South Sudan has not yet been determined.



European
Commission

Internally Displaced Persons

New displacements by conflict and disasters in 2019

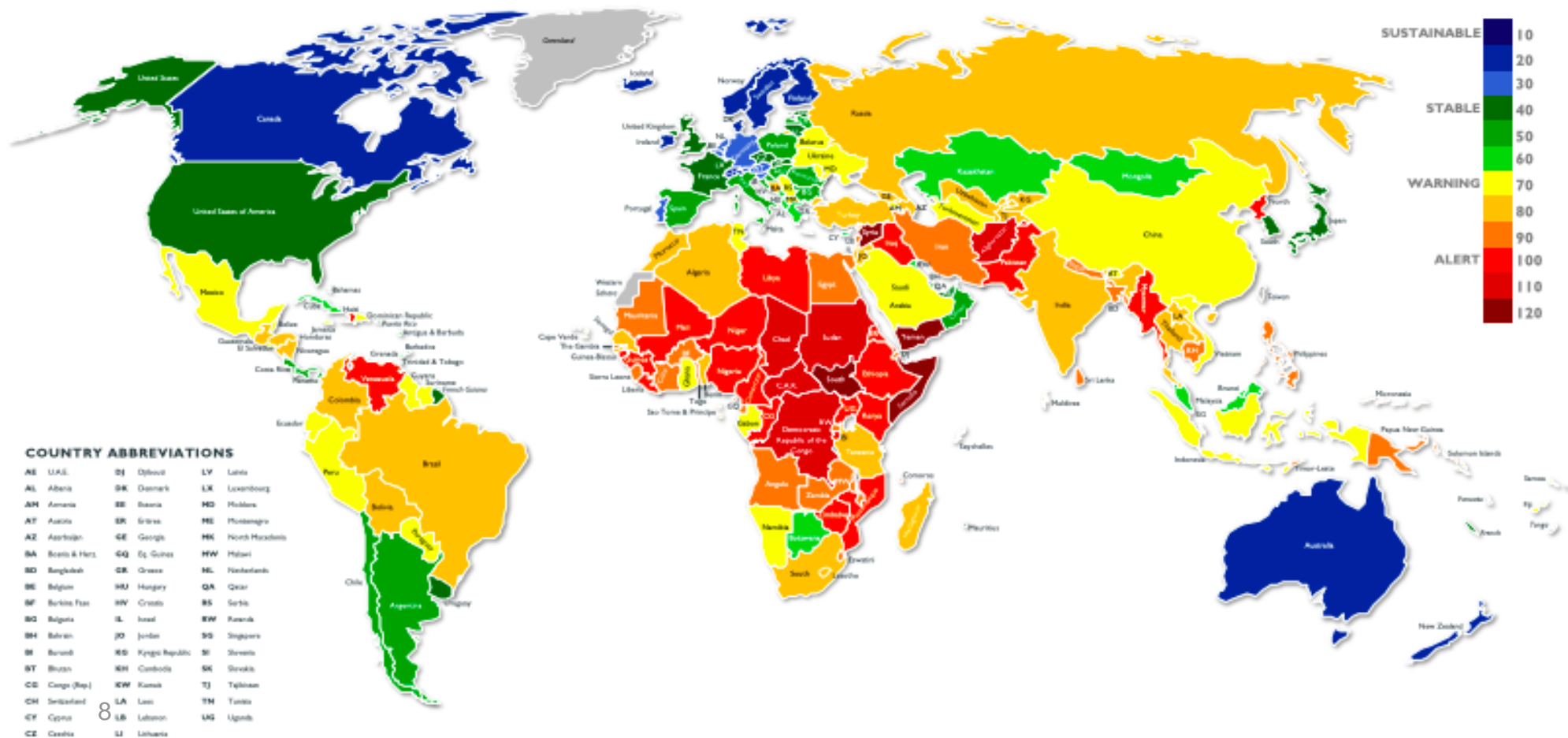


The country and territory names and figures are shown only when the total new displacements value exceeds 20,000. Due to rounding, some totals may not correspond with the sum of the separate figures.
The boundaries and the names shown and the designations used on this map do not imply official endorsement or acceptance by IDMC.

Fragility



THE WORLD IN 2020

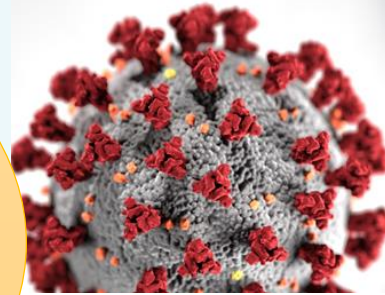


Foresights: worsening trends

Food systems at risk...

Number of
undernourished
people should exceed
840 million by 2030.

(State of Food Security and
Nutrition in the World –SOFI –
2020)



COVID-19

CORONAVIRUS DISEASE 2019

**a third more people in food crisis in
Africa** (Update April 2021, Global Report on Food
crises)



Pacific
Ocean

CONFLATING TRENDS

SEVERAL TRENDS ARE PUSHING AG-TECH FORWARD

**66% OF PEOPLE
WILL LIVE IN CITIES BY 2050**
COMPARED TO 54% IN 2014

**50% INCREASE
IN FOOD DEMAND BY 2050**



**31.8% DROP
IN AGRICULTURAL WORKERS IN
DEVELOPED COUNTRIES SINCE 1950**

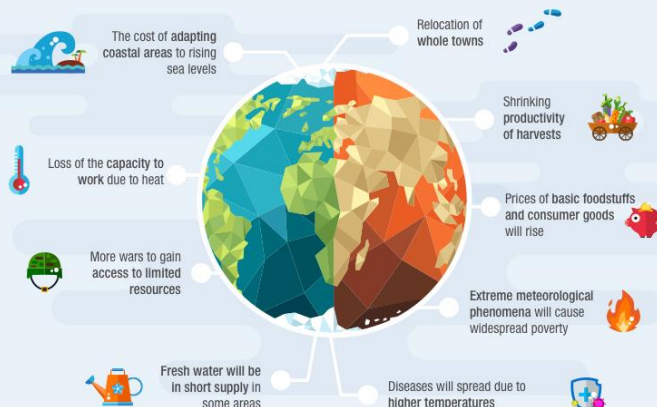
**3 BILLION
MORE MOUTHS TO FEED BY 2050**

**32.8% DROP
IN AGRICULTURAL WORKERS IN
DEVELOPING COUNTRIES**

SOURCE: FAO



SOCIAL AND ECONOMIC IMPACT OF CLIMATE CHANGE



Fresh water will be
in short supply in
some areas

Diseases will spread due to
higher temperatures

Soil degradation

- Very high severity
- High severity
- Moderate severity
- Low severity

Stable land, ice cap
or non-used wasteland

2. Within the Green Deals, the Farm to Fork Strategy (F2F) :

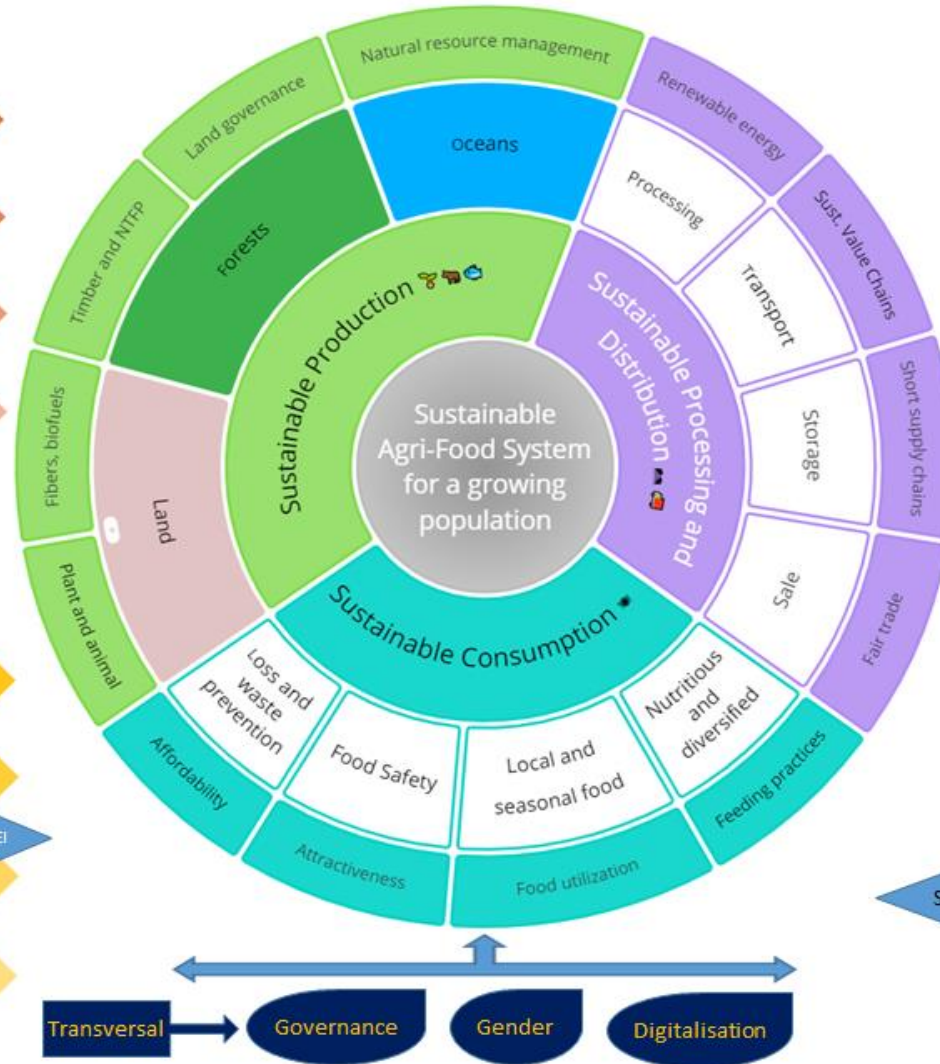
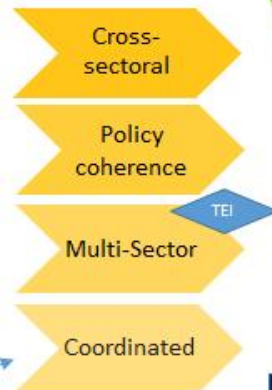
Towards Sustainable agrifood systems



POLITICAL BACKGROUND



INPUTS

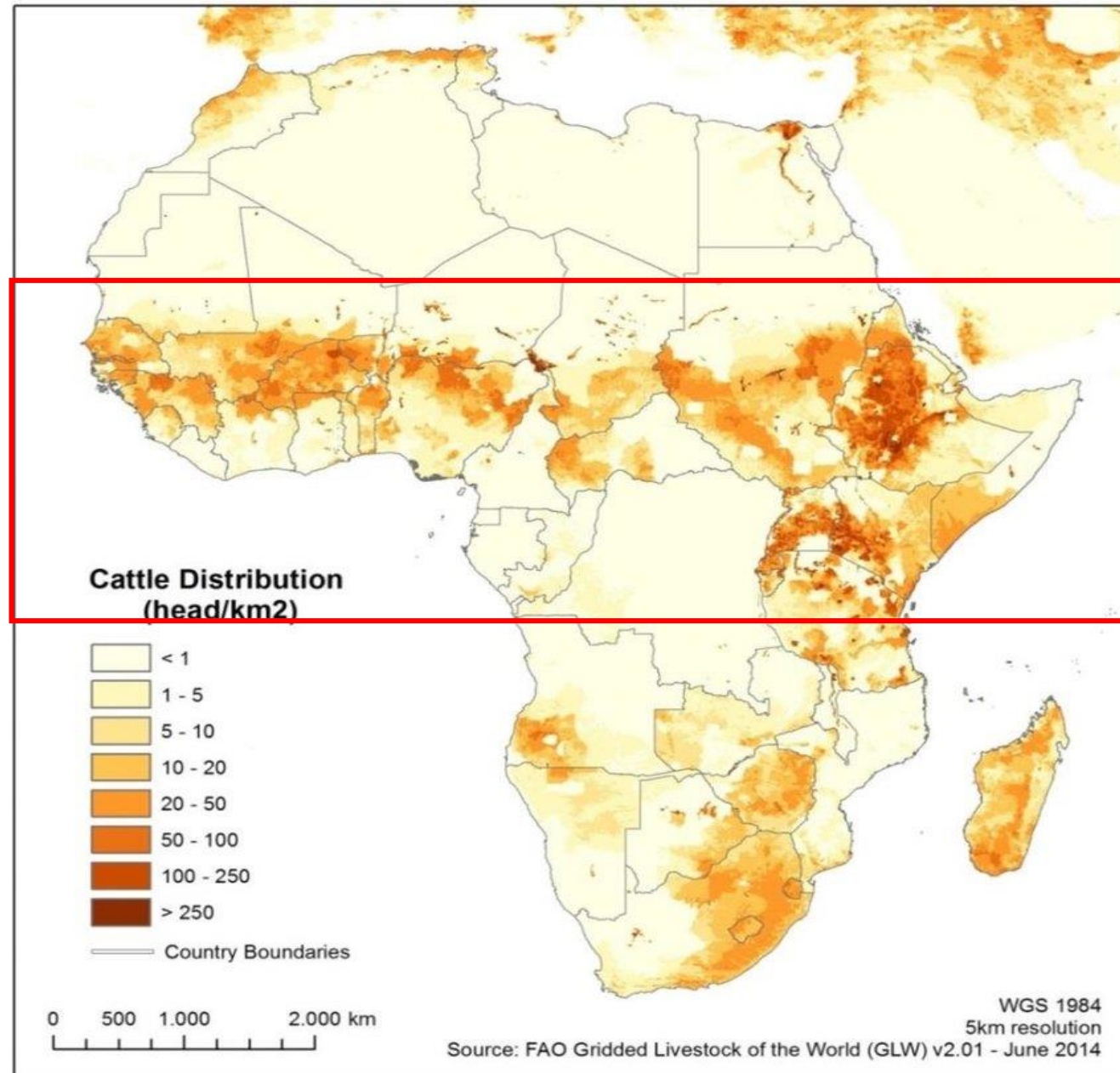


IMPACT

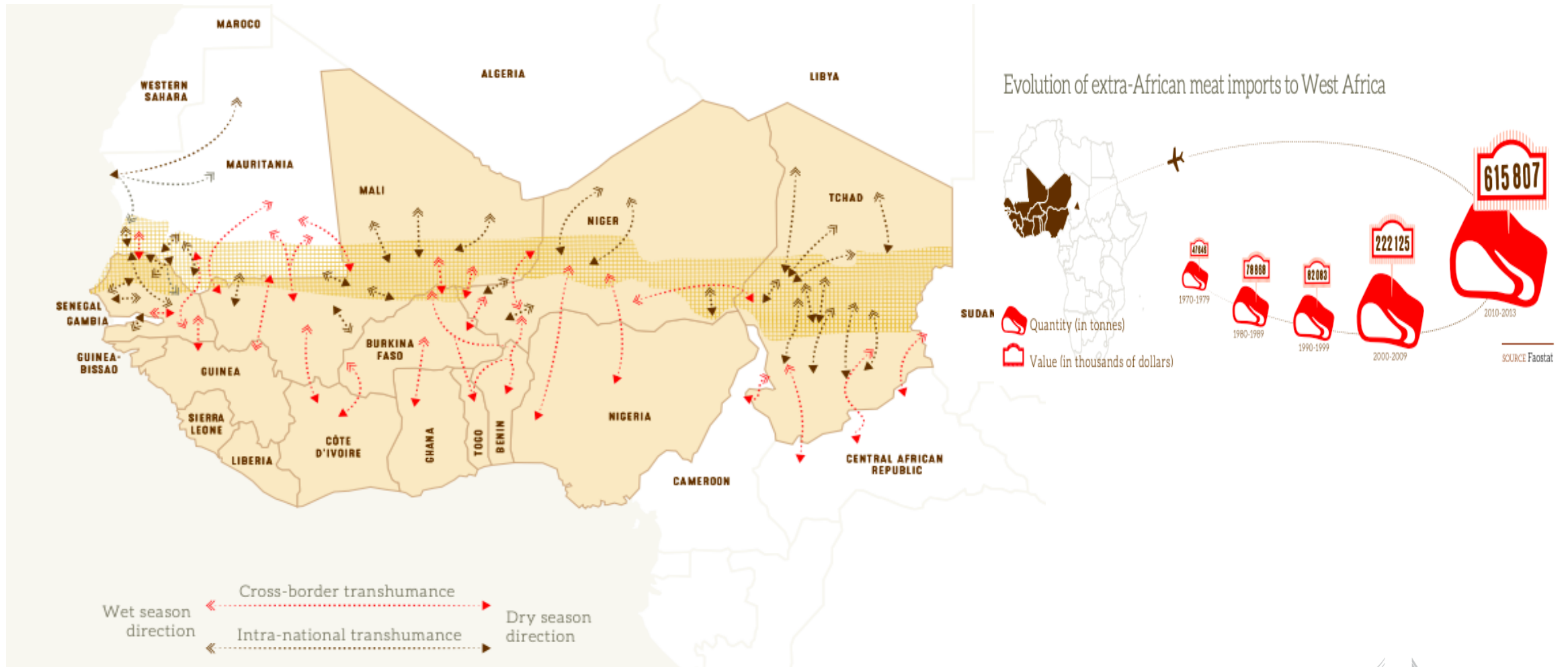


3. Pastoralism, an adaptive solution to cope with different shocks

Cattle distribution in Africa (Head/km²)

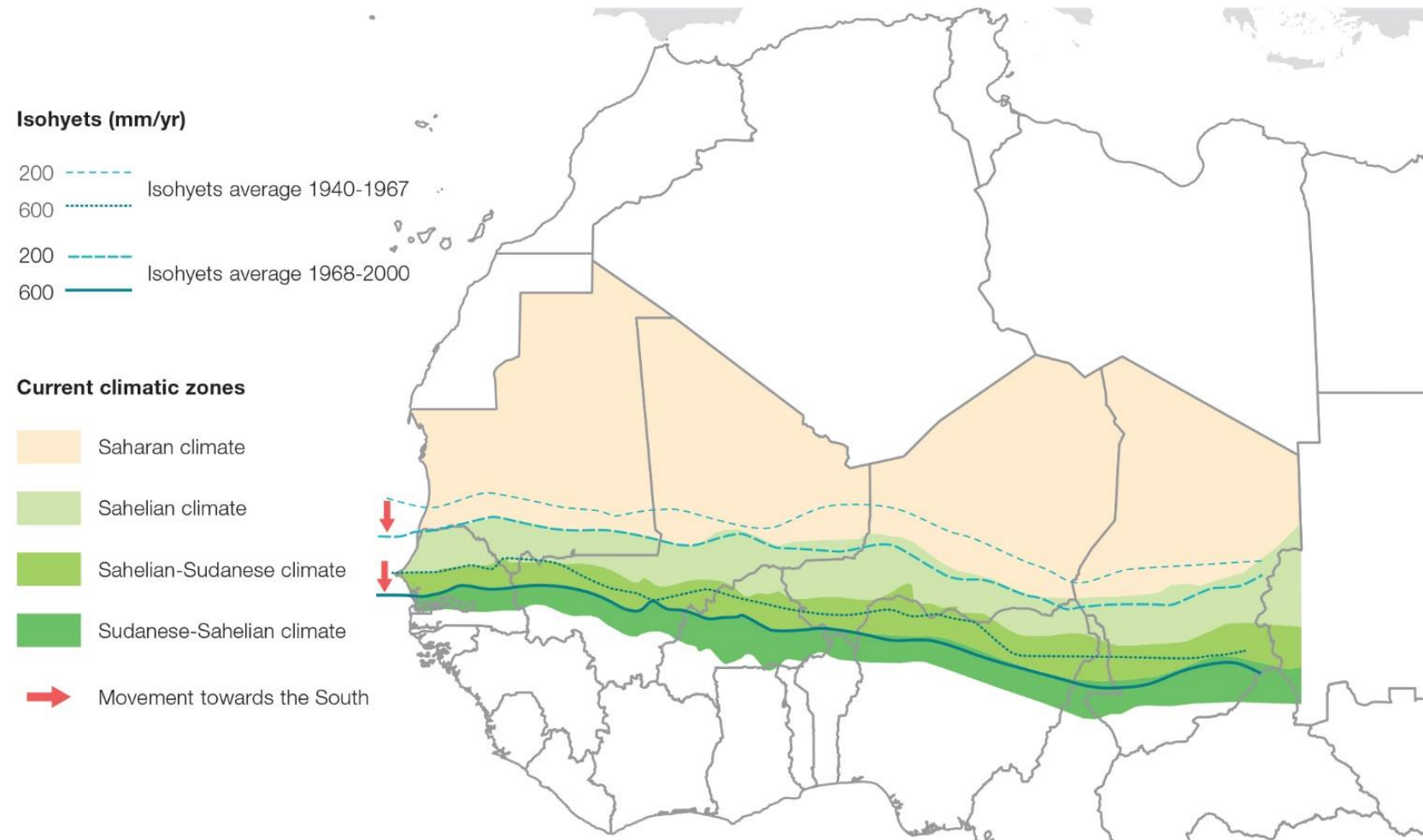


Regional livestock migration integrates the Sub-Saharan African eco-system.



RAINFALL EVOLUTION

Variation in isohyets between 1940-1967 and 1968-2000



Extract: OECD (2014), An Atlas of the Sahara-Sahel: Geography, Economics and Security, OECD Publishing, Paris.

© 2014. Sahel and West Africa Club Secretariat (SWAC/OECD)

4. Way forwards :

- Ongoing Programming
- 35 % for the Green Deals
- Sustainable agri-food systems approach

Potential EU response: example 1

Peste des Petits Ruminants (small ruminants pest)' eradication in Africa

- **“One shot, one spot” Request from UA and African countries**
- **Very high return on investments (3-years ROI)** – opportunity for **blending** finance
- **Key entry point for livestock breeding support**
- Highly accepted by livestock breeders - positive state service penetration – prompting **stability**
- High economic relevance for nomadic pastoralist as well as for small breeders
- **Social impact (savings, including in urban areas, for vulnerable household small breeders)**
- **Gender impact** – small breeders are often women
- Food security and nutrition outcomes – nutritious food





Example 2 – African Green Wall – as part of natural resources management



- Goals

- **Joint action with MS (Marseille Summit):**
- **Natural resources protection and restoration** – land, water, biodiversity, agroecology
- **Economic growth** – providing sustainable employment opportunities
- **Food security/nutrition** – Decreasing vulnerability to shocks and long term stresses
- **Stability** – conflict reduction

18



- Geographical level

- **National** – Support to state services (forestry, extension, etc.)
- **Regional** – Coordination mechanisms, Monitoring tools
- **Global** – international dialogue, trade preference



- Subsidiarity

- **EU –MS, WB, ADB, UN, AU, RECs**
- Cooperation modalities
 - **Budget support, Grants, Loans, Blending finance, etc.**

THANK YOU FOR YOUR ATTENTION

