



# The contribution of the Common Agricultural Policy to rural development

*Silvia Michelini*  
*Director*

*DG Agriculture and Rural Development*  
*European Commission*

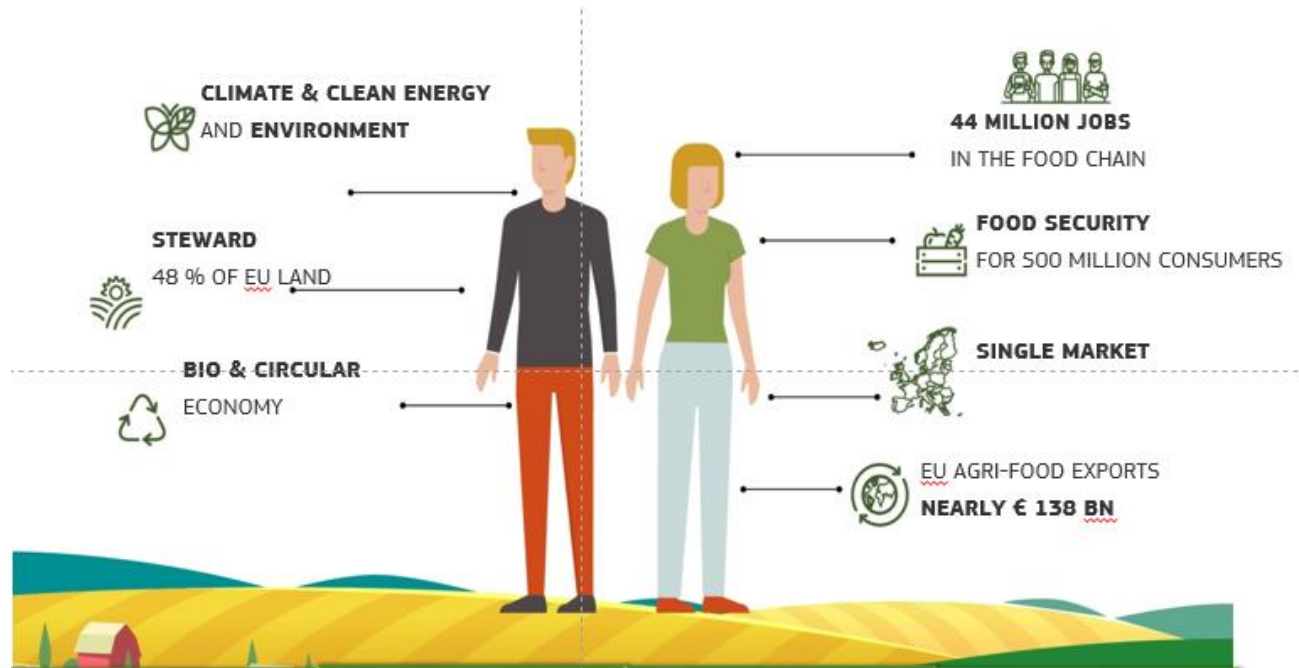
**#FutureofCAP**



# Content

1. Links between the CAP and rural development
2. The CAP reform
3. New Commission 2019-2024

# Importance of EU agriculture and rural areas



## The CAP and rural areas

- *A viable agricultural sector is essential for many rural areas*
- *Importance of Direct Payments and Market Measures*
- *Importance of Rural Development*



# Rural Development 2014-2020: some achievements



*More than 137 000 agricultural holdings benefited from investments in restructuring or modernisation*



*More than 100 000 young farmers received support for setting-up*



*17% of agricultural land under management practices beneficial for biodiversity*



*155 million rural citizens coming under a local development strategy*

# CAP post-2020: objectives



## CAP post-2020: main features

- *A new way of working*
- *Better targeting of direct payments support*
- *Higher ambitions on environmental and climate action*
- *Greater use of knowledge and innovation*



## CAP post-2020: budgetary aspects

billions € in current prices	2021-2027	
CAP (Total)	365.0	-5.0%
Pillar 1 (EAGF)	286.2	-3.9%
Pillar 2 (EAFRD)	78.8	-15.3%

Re-balancing between EAGF and EAFRD possible through budget transfers:

- 15% between both funds;
- additional 15% from EAGF to EAFRD for environment/climate interventions;
- additional 2% from EAGF to EAFRD for young farmers support





## New Commission 2019-2024

*"Our rural areas are home to more than 50% of Europeans. They are the fabric of our society and the heartbeat of our economy. The diversity of landscape, culture and heritage is one of Europe's most defining and remarkable features. They are a core part of our identity and our economic potential. We will cherish and preserve our rural areas and invest in their future"*

President-elect Ursula von der Leyen, political guidelines

*"You will develop a new long-term vision for rural areas, working closely with the Vice-President for Democracy and Demography. You will ensure that the needs of rural areas are specifically catered for in national Strategic Plans under the new Common Agricultural Policy"*

President-elect von der Leyen's Mission Letter to Janusz Wojciechowski



***Thank you for your attention!!***

**More information:**

[https://ec.europa.eu/agriculture/future-cap\\_en](https://ec.europa.eu/agriculture/future-cap_en)

