

# Monitoring integration and integration policy in Helsinki

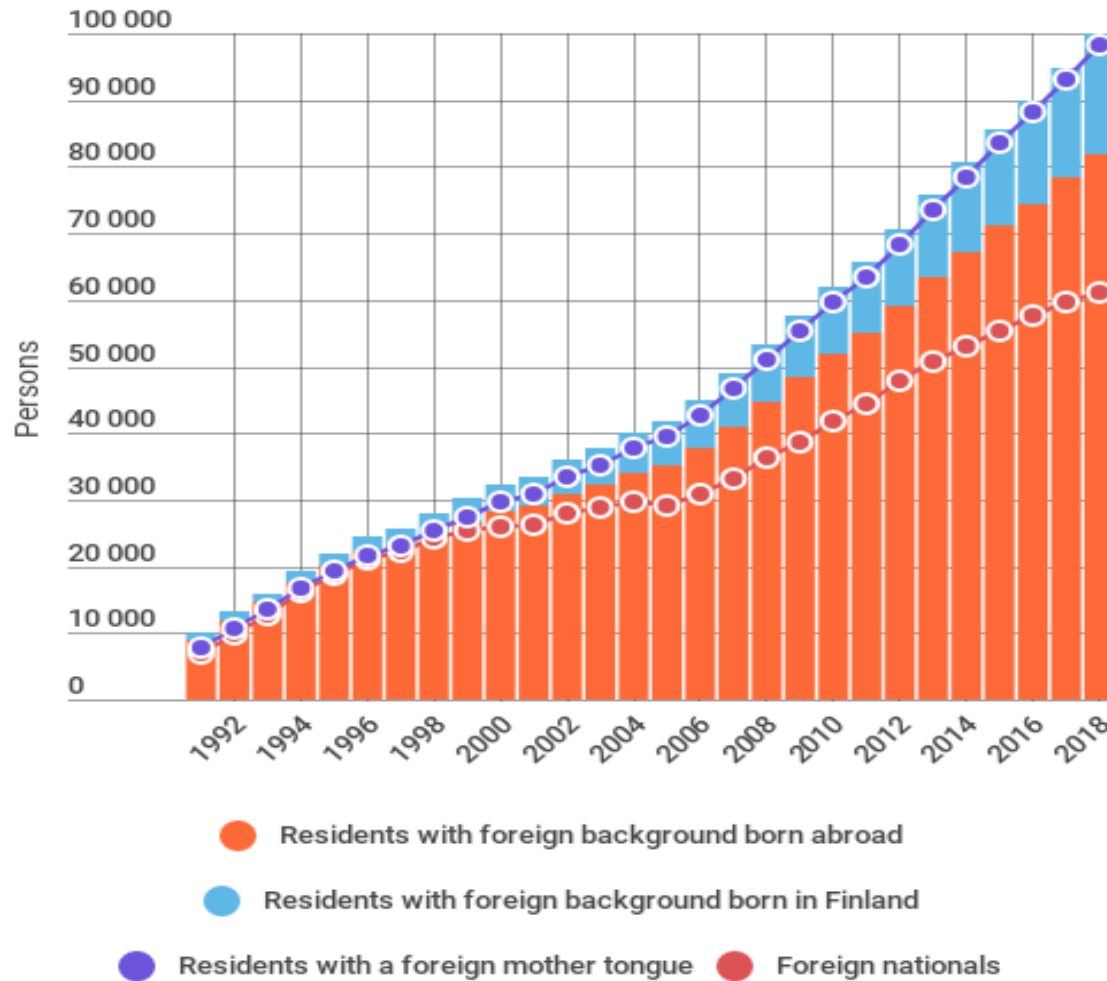
A Conference of the Urban Agenda Partnership on the  
Inclusion of Migrants and Refugees

Brussels 4 December 2018

Helsinki

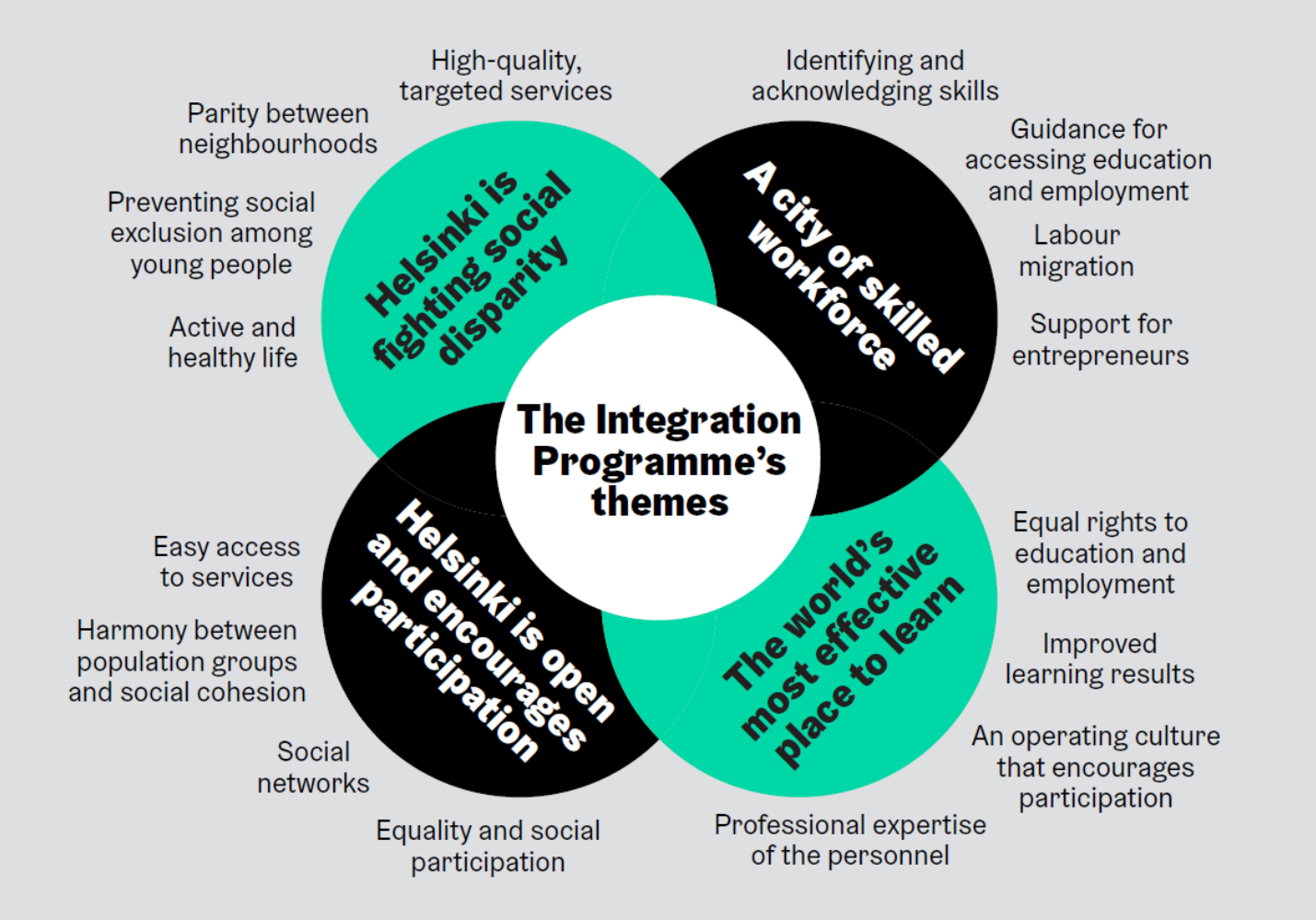
Pasi Saukkonen

# Population in Helsinki has become increasingly diverse



Source: Statistics Finland

# The city is tackling this multi-dimensional issue with multiple means



Source: City of Helsinki Integration programme

# An important component in integration policy-making is the monitoring system

- Continuous monitoring based on population register data:  
<https://ulkomaalaistaustaisethelsingissa.fi/en/content/population-foreign-background-helsinki>
- Regular analysis regarding employment, income, and housing:  
[https://www.hel.fi/hel2/Tietokeskus/julkaisut/pdf/16\\_12\\_01\\_Tutkimuskatsauksia\\_12\\_Saukkonen.pdf](https://www.hel.fi/hel2/Tietokeskus/julkaisut/pdf/16_12_01_Tutkimuskatsauksia_12_Saukkonen.pdf) (in Finnish, English Summary)
- Co-operation with the state and Statistics Finland to gather survey data:  
[https://www.hel.fi/hel2/tietokeskus/julkaisut/pdf/18\\_09\\_13\\_Tutkimuskatsauksia\\_2\\_Saukkonen\\_Peltonen.pdf](https://www.hel.fi/hel2/tietokeskus/julkaisut/pdf/18_09_13_Tutkimuskatsauksia_2_Saukkonen_Peltonen.pdf) (in Finnish, English Summary)
- City strategy and the integration programme include indicators:  
[https://www.hel.fi/static/liitteet/kanslia/maahanmuuttajat/compressed\\_Koto%20englanniksi.pdf](https://www.hel.fi/static/liitteet/kanslia/maahanmuuttajat/compressed_Koto%20englanniksi.pdf)
- Ad hoc studies are carried out when needed. The city conducts own research projects related with immigration and integration.

# Experience of research-policy dialogue

- In the city of Helsinki, researchers and statisticians have a good relationship with the political decision-makers and the city administration in integration policy. There is regular contact, and the city is informed of our publications and other activities.
- Decision-makers and city officials appreciate statistical data & research results. However, often there isn't enough time to deal with complicated issues.
- Requests for data are often related with specific situations. Investing in long-term data gathering and analysis is more cumbersome.
- Statistical and research findings that swim upstream sometimes require a lot of effort to be accepted.
- Proper evaluation of integration and integration policies is often difficult. Policy objectives are not well articulated; we do not know the situation before intervention; the time-span for evaluation is too short.

# Thank you!

- Pasi Saukkonen
- Senior Researcher, Adjunct Professor
- City of Helsinki, Executive Office, Urban Research and Statistics
- Tel: + 358 40-3344800
- E-mail: [pasi.saukkonen@hel.fi](mailto:pasi.saukkonen@hel.fi)
- <https://pasisaukkonen.wordpress.com/>
- Twitter: @pasi\_saukkonen