



Common Provisions Regulation (CPR) European Regional Development Fund (ERDF) 2021-2027

Committee of the Regions, 28 September 2021

Otilia CIOBANU

DDG.03 Competence Centre - Inclusive Growth, Urban and Territorial Development
DG Regional and Urban Policy (DG REGIO)

What you need to know?

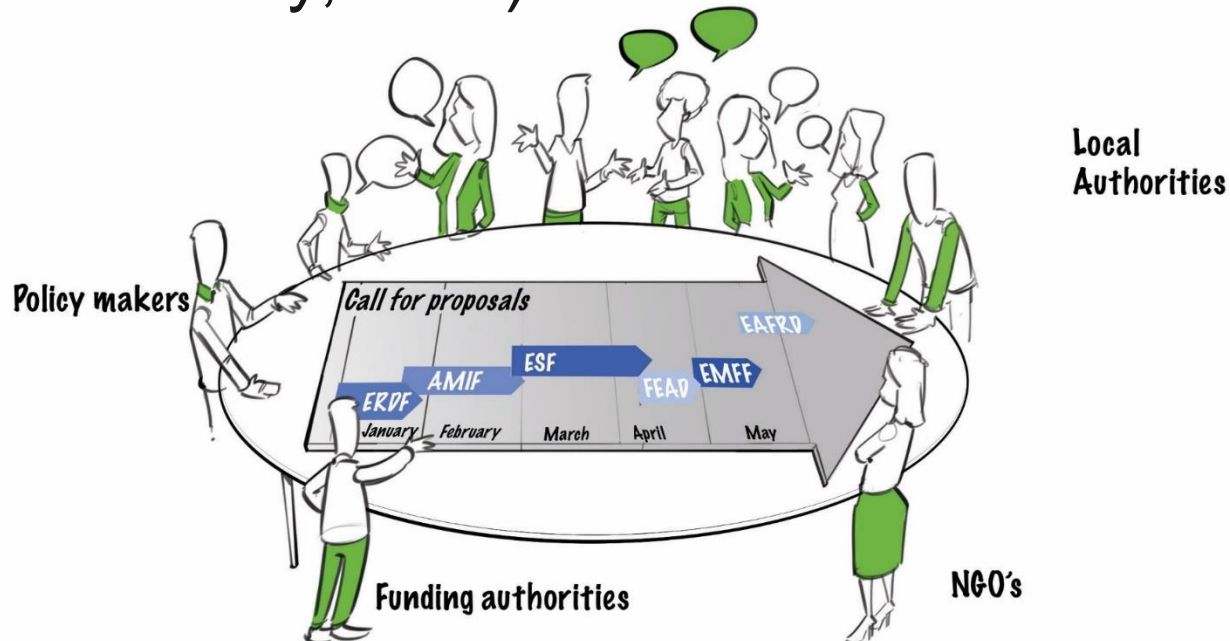
Relevant info for local/regional authorities in the scope of using EU funds for integration of people with a migrant background

1. How to access EU funds?
2. Scope of support of ERDF
3. Urban policy initiatives and instruments



How to access EU funds?

- Shared management → call for proposals are published by managing authorities
- ERDF support in your country
- Open Data Platform (by theme, country, fund)



Partnership principle (Art 8)

Involvement in all programming stages of:

- **regional, local, urban and other public authorities;**
 - economic and social partners
 - relevant bodies representing civil society, such as:
 - NGOs and bodies responsible for promoting:
 - social inclusion, fundamental rights, non-discrimination etc.
- + in Monitoring Committees (Art 39)

Policy objective 4



❖ **LABOUR MARKET** (Art 3(d)(i) ERDF/CF Regulation)

4.1: enhancing the effectiveness and inclusiveness of labour markets and access to quality employment through developing social infrastructure and promoting social economy;

❖ **EDUCATION AND TRAINING** (Art 3(d)(ii) ERDF/CF Regulation)

4.2: improving equal access to inclusive and quality services in education, training and lifelong learning through developing accessible infrastructure, including by fostering resilience for distance and on-line education and training;

❖ **SOCIAL INCLUSION** (Art 3(d)(iii) ERDF/CF Regulation)

4.3: promoting the socioeconomic inclusion of marginalised communities, low income households and disadvantaged groups including people with special needs, through integrated actions, including housing and social services;

❖ 4.4: promoting the socio-economic integration of third country nationals, including migrants through integrated actions, including housing and social services; (Art 3(d)(iv) ERDF/CF Regulation)

❖ **HEALTH** (Art 3(d)(v) ERDF/CF Regulation)

4.5: ensuring equal access to health care and fostering resilience of health systems, including primary care, and promoting the transition from institutional to family- and community-based care;

❖ **CULTURE AND TOURISM** (Art 3(d)(vi) ERDF/CF Regulation)

4.6. enhancing the role of culture and sustainable tourism in economic development, social inclusion and social innovation.



- Measures should be connected across thematic areas, including, **education, employment, social housing, health and social care, anti-discrimination etc.**
- ERDF can support **infrastructure development, equipment and access to quality mainstream services** in all areas above
- Should **not lead to further segregation/isolation of marginalized communities** and building parallel services
- **Requirement:** fulfilment of thematic enabling conditions under PO4

Thematic investment areas:

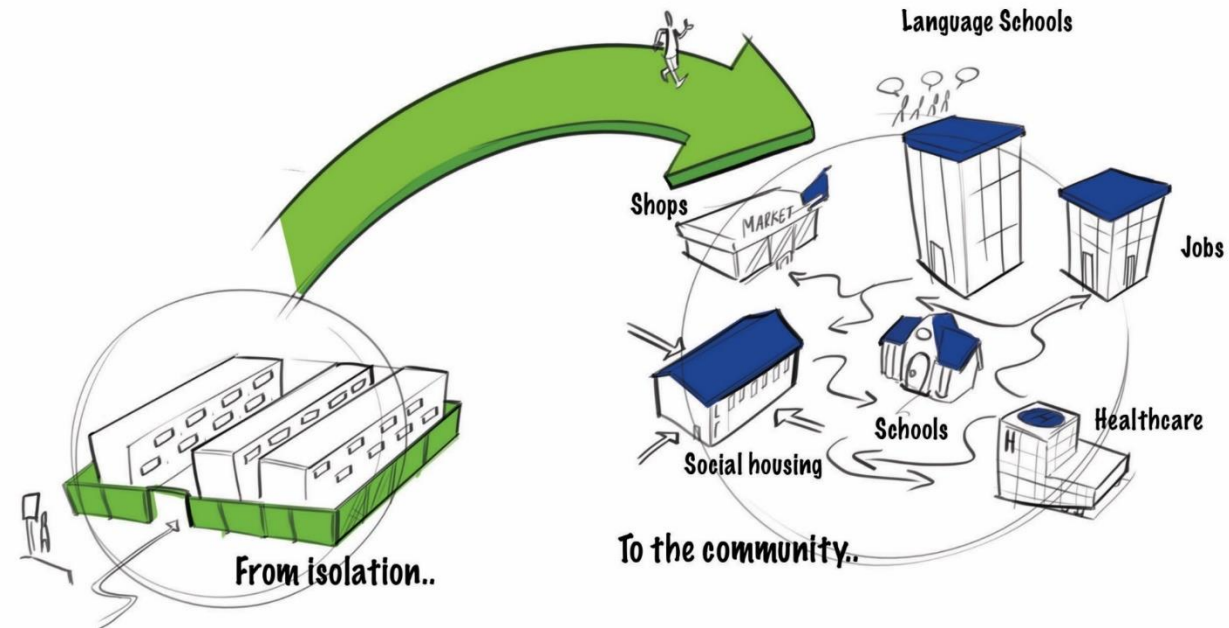
- Regeneration of deprived urban and rural areas
- Shift from institutional to community-based services
- Addressing educational and spatial segregation
- Support for business start-ups

Territorial instruments:

- ❖ **ITI**
- ❖ **CLLD**
- ❖ **SUD**

Examples of **ERDF-supported measures** for the integration of people with a migrant background:

- ❖ **Social housing** in the mainstream community / non-segregated areas (also in the scope of desegregation measures)
- ❖ **Extension of capacities of mainstream** kindergartens, schools, afternoon schooling, VET, labour market institutions, health and social care facilities etc.
- ❖ **IT equipment** to support access to distant and online education
- ❖ **Bus transport** for people in marginalized communities to access the mainstream services above
- ❖ Building **family- and community-based services** for people with disabilities, children deprived of parental care, elderly (individual apartments, day centres, equipment, accessible transport etc.)



The needs of people with a migrant background can be also addressed through **mainstream measures under local and territorial development strategies.**

Main requirements for Cohesion Policy support for territorial strategies:

- ❖ Interventions should be part of **territorial or local strategies** of relevant local or territorial bodies (8% urban earmarking)
- ❖ Locally coordinated interventions through an **integrated approach** (cross-sectoral, multi-stakeholder, multi-territorial)
- ❖ Relevant **local or territorial bodies involved** in project selection
- ❖ **Partnership with relevant actors** to be ensured at local level

Initiatives to support local integration policy making

Updated Toolkit on the use of EU funds for integration of people with a migrant background 2021-2027

- Legal and policy framework
- Synergies between EU funds
- Scenarios – reception, housing, inclusive education, access to basic services for vulnerable groups etc.

New chapter on local level of integration policy



- ❖ [European Urban Initiative \(EUI\)](#)
- ❖ [Urban Innovative Actions \(UIA\)](#)
- ❖ Urban Agenda for the EU [Partnership on Inclusion of Migrants and Refugees](#)

[Study on the territorial impact of migration with a special focus on the local level](#) (OECD-EU Commission 2018)

- Statistical analysis – local data on integration of people with a migrant background
- 9 case studies (Barcelona, Amsterdam, Berlin, Athens, Paris, Althana, Glasgow, Vienna, Rome, Gothenburg)
- 12 points (checklist) for local integration policy making

Thank you for your attention!