



WE, THE CITY OF HAMBURG!

**HAMBURG INTEGRATION CONCEPT -
STAKEHOLDER PARTICIPATORY APPROACH**

18.06.2021, Eurocities

Contents

1. What is meant by integration
2. Hamburg integration concept – starting situation
3. Hamburg integration concept – update in 2017
4. Main areas of focus
5. Stakeholder Participation

What is meant by integration

Hamburg integration policy

- Aims to ensure that people **enjoy equal rights when it comes to participation** in key areas of community life, whether they have an immigrant background or not.
- **Structural data** are **made measurable** by means of the integration concept and compared with the results –regarding the integration climate –from the integration barometer.
- The key strategy is **achieving intercultural openness** of the state.
- A concept which since 2013 has covered **all** people with an immigrant background, i.e. refugees too.
- A **“We-concept”**, which is aimed both at the immigrants and the society accepting them, since integration can only succeed if society as a whole embraces the task.

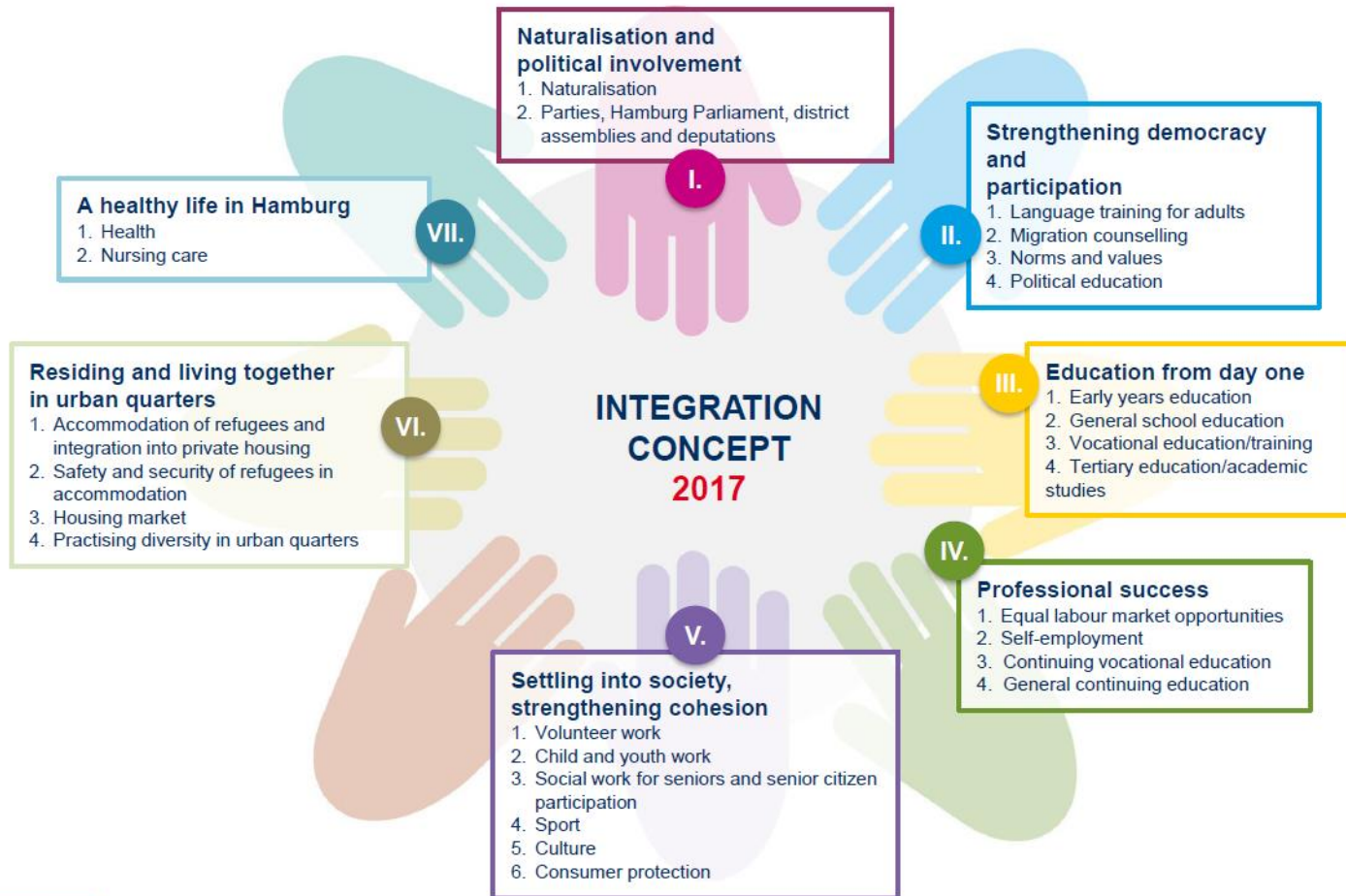
Hamburg integration concept - starting situation

- Hamburg has had an integration concept since as early as 2006
- 2013: First update (“Hamburg Integration Concept –Participation, Intercultural Opening and Cohesion”)
- 2017: Second update (“We, the city of Hamburg! Participation, Intercultural Opening and Cohesion”)

“Participation, Intercultural Opening and Cohesion”

- Integration understood as measurable equal participation –for the first time, indicators with target values for all areas.
- Inclusive idea –“We-concept”.
- Orientation towards goals (not measures or projects).
- Key strategies: intercultural opening and antidiscrimination.
- Refugees explicitly included as a target group.
- **Participation process (integration committee, specialist authorities...)**

Main areas of focus



Measurable equal participation

- Each section of the integration concept contains a **we-statement**, effectively as a “**meta-target**”.
- Sub-goals have been developed for all areas of life/specialist policy which can be dynamically adapted.
- **Indicators (approx. 140)**: we use these to assess what we understand by equal participation in this area.
- **Target values**: we use these to measure whether we are making progress in integration –with reference to the specialist policy approach in each case.
- We don't think in projects! We try to govern in an outcome-oriented way and to place the **state's systems of rules** at the heart of what we do.

The participation procedure

- The Senate's integration policy, in particular the integration of refugees has gained **a lot of publicity in Hamburg** as well as nationwide.
- Citizens of Hamburg are highly involved in this process.
- Engaging in a **wide variety of associations and initiatives**.
- Greater role of the participation in the updated and revised version.

City-wide participation procedure

- From November 2016 to March 2017 **40 different events** held with various stakeholders from civil society, interest groups and institutions.
- Examples: **Integration advisory council**, senior citizens' council, charitable associations, **refugee initiatives**, local prevention networks, resident councils of initial reception facilities, students from international preparatory classes, local events in the seven districts of Hamburg.
- Stakeholders discussed the most **important aspects and elements of integration** and the (initial) integration of refugees.
- Refugees could be involved in the process.
- Process has been **externally moderated by the Lawaetz Stiftung**.

Online survey

- **Online survey** between early November and mid-December 2016 for all Hamburg residents in order to achieve the widest possible participation.
- **530 persons took part** in this survey.
- They were asked to identify the most important areas of action for the integration concept.
- They were also asked to subjectively evaluate the practical integration policy in Hamburg.
- The majority of these respondents made statements about **norms and values, living together in the urban quarters, volunteering and accommodation.**

Additional talks with members of IFI*

- **Six talks** with members of IFI about the implementation of a “**Masterplan Integration**”.
- Discussions focused on the **labour market, early childhood education and school**. They were asked to identify the most important areas of action for the integration concept.
- The Expert Council of German Foundations on Integration and Migration (SVR) was commissioned to **prepare a scientific expert report** on the integration concept.
- SVR was also mandated to establish **an integration barometer** for Hamburg.

* **IFI**= Member of Hamburg Alliance of Refugee Initiatives

Documentation of the participation procedure

- Process has been **fully documentend** by the Lawaetz Stiftung and published at the internet.
- The competent authorities and administrative offices **have reviewed and evaluated the feedback** provided in the form of statements, open questions and proposals.
- Results used for **specific measures** and for the **development of integration indicators**.

Limits of a participation procedure

- Suggestions and proposals made on topics over which Hamburg has no direct influence.
- The integration strategy only represents an extract of the technical strategies for action.
- Not all ideas fit in this strategy. Excluded ideas will be incorporated into or have already been established in the technical concepts of the involved administrative offices.
- Data, which is required for proposals relating to the addition of further indicators of integration, is not available.

Thank you for your attention.

The integration concept can be downloaded from:

[hamburg-integration-concept.pdf](#)



Contact for enquiries:

Department for Integration of Immigrants

Dr. Susanne Muth – Head of department

Tel.: +49 40 428 63 – 2953

E-Mail: susanne.muth@soziales.hamburg.de

Dorothea Stille

E-Mail: dorothea.stille@soziales.hamburg.de

Silvia Neumann

E-Mail: silvia.neumann@soziales.hamburg.de