



EMODnet



European Marine
Observation and
Data Network

Your gateway to marine data in Europe

Ocean Meets Regions

The Regional Aspects of Ocean Governance

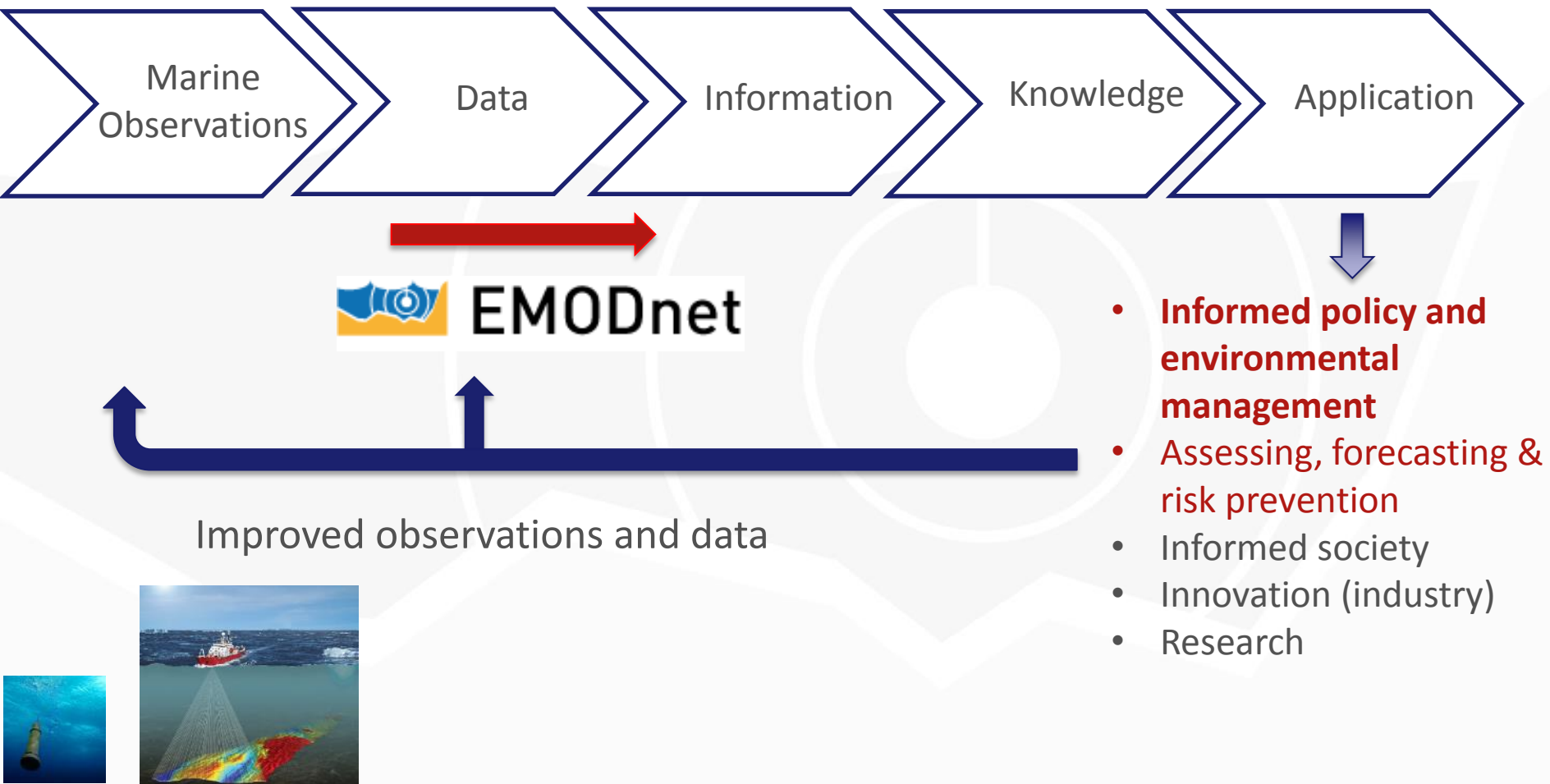
Pascal Derycke
& Jan-Bart Calewaert

EMODnet Secretariat

Janbart.Calewaert@emodnet.eu

Marine Knowledge Value Chain

Data can only create provide knowledge and reduce uncertainty for those managing activities in and around the sea, if it can be found, accessed and used





EMODnet



European Marine
Observation and
Data Network



BATHYMETRY

Data on bathymetry (water depth), coastlines, and geographical location of underwater features, wrecks.



[USE CASES](#) [INFO](#) [ACCESS](#)



GEOLOGY

Data on seabed substrate, sea-floor geology, coastal behaviour, geological events, and minerals.



[USE CASES](#) [INFO](#) [ACCESS](#)



SEABED HABITATS

Data on modelled seabed habitats based on seabed substrate, energy, biological zone, and salinity.



[USE CASES](#) [INFO](#) [ACCESS](#)



CHEMISTRY

Data on the concentration of nutrients, organic matter, pesticides, heavy metals, radionuclides and antifoulants in water, sediment and biota.



[USE CASES](#) [INFO](#) [ACCESS](#)




BIOLOGY

Data on temporal and spatial distribution of species abundance and biomass from several taxa.






[USE CASES](#) [INFO](#) [ACCESS](#)



PHYSICS

Data on salinity, temperature, waves, currents, sea-level, light attenuation, and FerryBoxes.



[USE CASES](#) [INFO](#) [ACCESS](#)

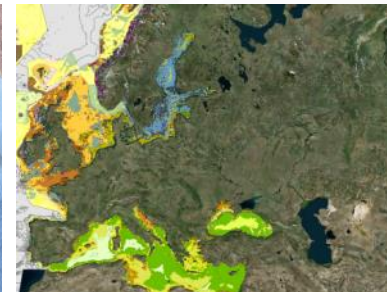
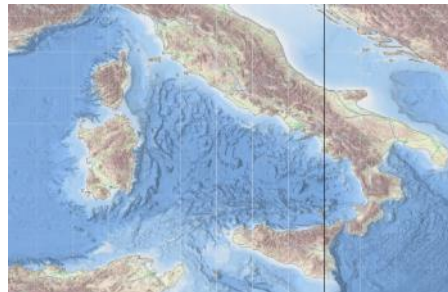


HUMAN ACTIVITIES

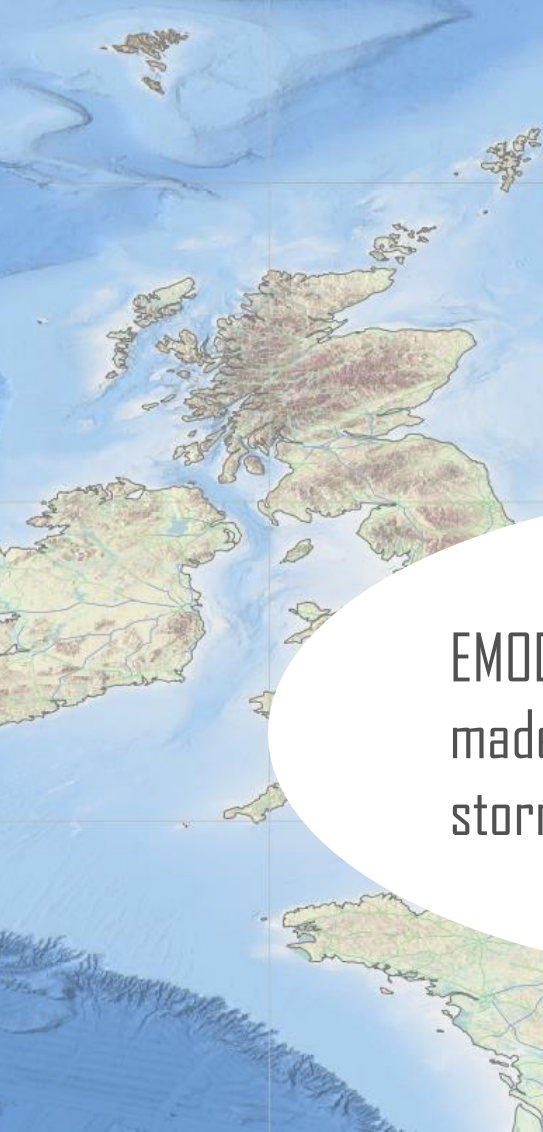
Data on the intensity and spatial extent of human activities at sea.



[USE CASES](#) [INFO](#) [ACCESS](#)



Improved storm surge forecasting



EMODnet topographic maps have made massive improvements to our storm surge forecasts



Dr. Clare O'Neill UK Meteorological Office



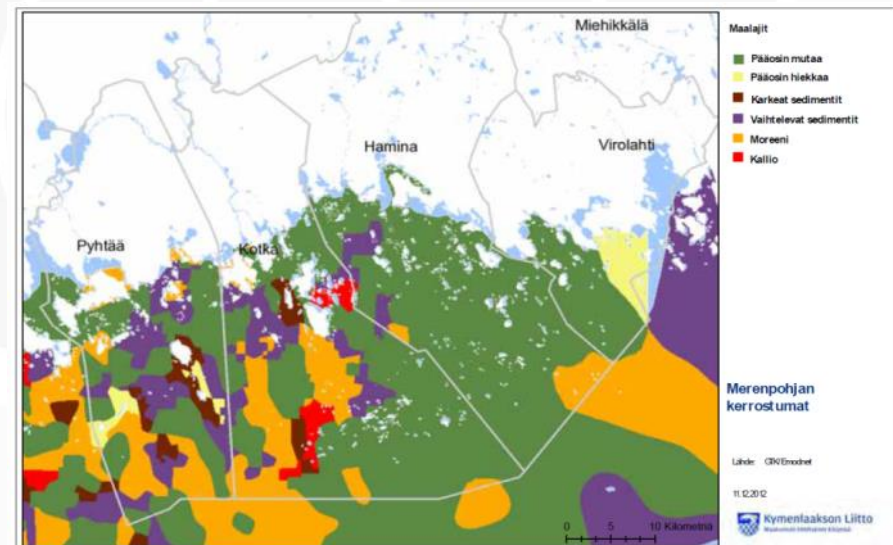
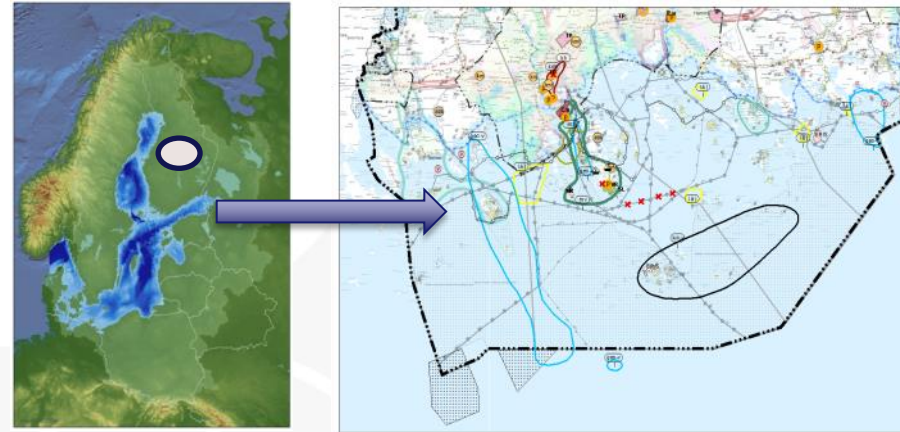
EMODnet



European Marine
Observation and
Data Network

Gulf of Finland spatial plan

- Gulf of Finland Regional Plan for Trade and the Sea Area
- **EMODnet-Geology** seabed substrate data was provided to planners.
- Marine geologists (and biologists) interacted with planners to evaluate what is available for marine spatial planning.
- **Information easy understood by decision-makers**





EMODnet

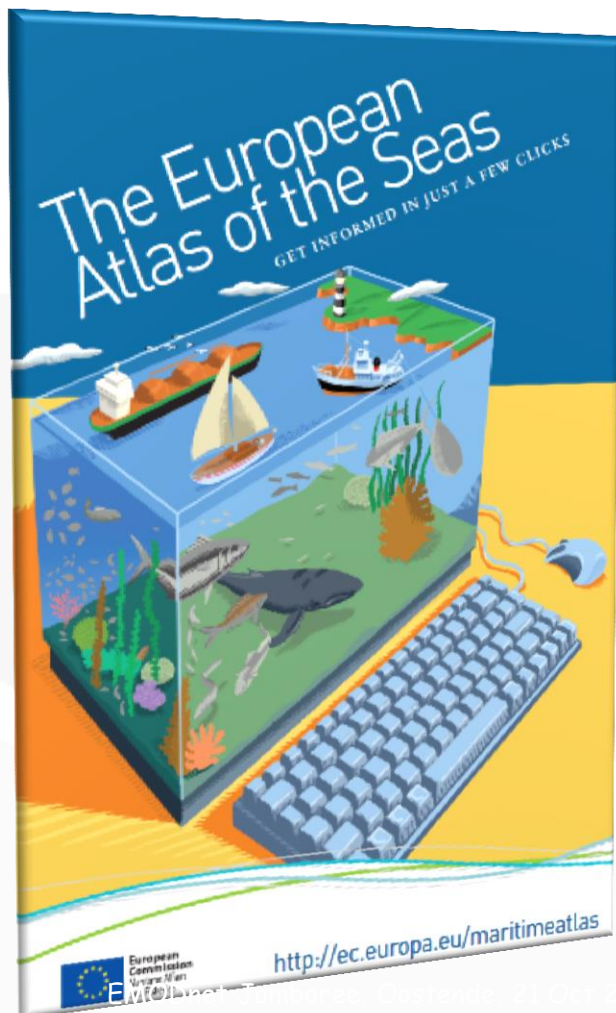


European Marine
Observation and
Data Network



European
Commission

Atlas of the Seas



- environmental & socio-economic data layers

- *geography*
- *environment*
- *security and safety*
- *fisheries and aquaculture*
- *tourism and protected areas*
- *transport, energy and maritime resources*
- *people and employment*
- *governance and European policies*

- technical features

- *multi-theme, map overlay*
- *selection with drop-down menu*
- *time slider*
- *bar chart with time series*
- *map queries (pop-up frames)*
- *data layer description (with the "info" button)*
- *metadata & sources*

- user feedback



EMODnet



European Marine
Observation and
Data Network

It is all about sharing & bringing people and ideas together



<http://www.emodnet.eu/video>





EMODnet



European Marine
Observation and
Data Network

Data Ingestion portal

**DATA INGESTION PORTAL**
Wake up your data - set them free for Blue Society

Search 

CONTACT


ABOUTDATA SUBMISSIONGUIDELINESSUBMISSIONSDATA WANTEDHELPOPERATIONAL DATAPROMOTIONCENTRAL PORTAL

Home

Welcome to the EMODnet Data Ingestion portal

The European Marine Observation and Data Network (EMODnet) consists of more than 160 organisations that together work on assembling, harmonising and making marine data, products and metadata more available to public and private users. This Data Ingestion portal facilitates additional data managers to ingest their marine datasets for further processing, publishing as open data and contributing to applications for society.


READ MORE



Submit your data

The online Data Submission service facilitates you to submit marine datasets by completing a form and uploading your data as a package. The service also provides long term stewardship and publishing for your datasets.


READ MORE



Check guidelines for formatting data

The wider use and processing of your submitted datasets by public users and by receiving data centres is made much easier if you apply standard formats and quality control to your datasets before submission. This option gives an overview of relevant guidelines for various marine data themes.


READ MORE



View submissions

View, search and download datasets that have been submitted by data providers using the Data Submission service.


READ MORE



Data wanted

Are you seeking specific datasets and can not find them in any of the EMODnet portals? Specify and post your needs.


READ MORE



Help

The Help desk can provide you assistance and instructions when required.

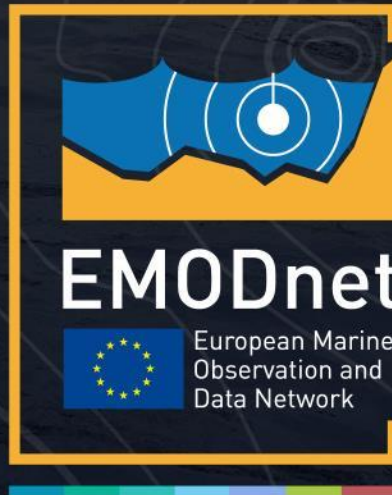
READ MORE



Operational data

The EMODnet Physics portal brings together Near Real-Time (NRT) and validated archived data timeseries of fixed and autonomous ocean observing platforms. This section explains how your operational oceanography stations might be included.

Thank you



www.emodnet.eu

Your gateway to marine data in Europe